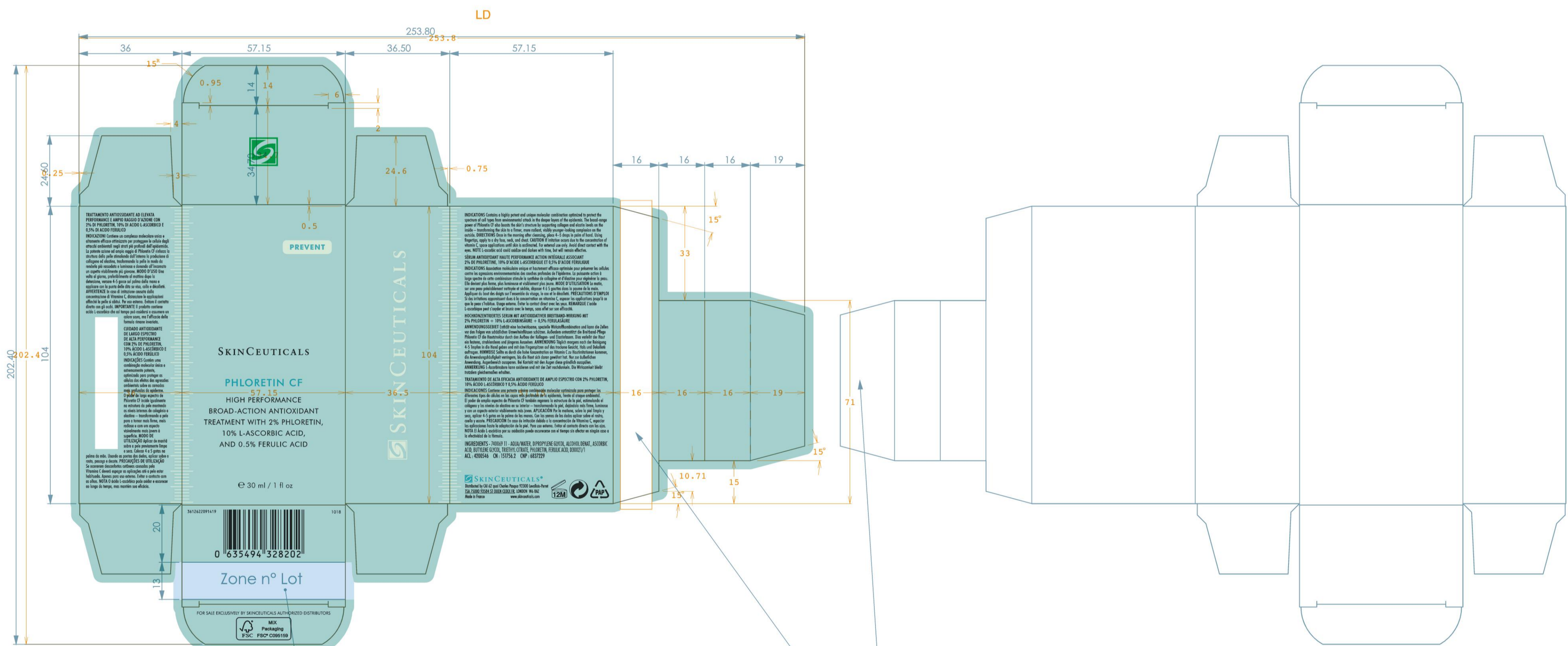




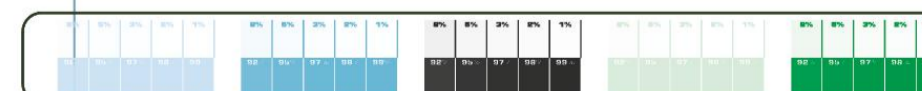
empreinte 22719-d  
La Roche Posay  
57.15 x 253.80 mm  
MB Phloretin 255g/m2  
25.03.19

VERSO



Zones non décorables (reserve vernis / impression)

réserve vernis et impression



<b>diadeis</b>	REL. BD Du DÉPARTEMENT MARKING	N° KAPA: 322816	version
creating brand efficiency	TEL : +33 (0) 49 58 80 00	N° Projet : CAD04150	3 GRAY
Skineuticals	Product Code : MB185700	Support : CARTON BLANC	
Protoc	Usine : CAP	Fournisseur : Autajon Saublerin	
Article : 3612622091419 SD : 00002191			
Pdf Name : AC_MK32816_3612622091419_Protoc_ETUI_PHLORETIN 30 ml_30ML_MB185700			

100	75	50	25	5
57.7 %	0.1 %	2.7 %	56.9 %	0.1 %
REL. BONDING	REL. BONDING	REL. BONDING	REL. BONDING	REL. BONDING

- \* Construction dimensions  
- The construction of complex surface must be carried out using the available 3D file.  
All interpretations must be approved by the L'Oréal design office.

Incl	Date	Modifications	Appr/Drw
B	04/04/2019	Maj ficheur découpe	FR JH
A	27/03/2019	Création	OP

Do not measure from the drawing, respect the dimensions indicated.  
Bored dimensions : Construction dimensions of the mould / framed dimensions : Critical dimension for control.  
The drawing is the property of L'ORÉAL and cannot be re-used or reproduced without its authorization.

Tel : 01 58920000  
**A2**

**L'ORÉAL**  
Surface décorable - Etui  
Skineuticals

Scale : 1:1  
Date : 27/03/2019  
Appr : Taïne Clémence

**CC002191**